

CTSA

Clinical & Translational
Science Awards Program



Ensuring Good Clinical Practice in Medical AI Research

Amar Das, MD, PhD

Program Director, Integrated Care Research, IBM Research AI

Adjunct Associate Professor, Department of Biomedical Data Science,
Dartmouth



Why evaluate? What to evaluate?

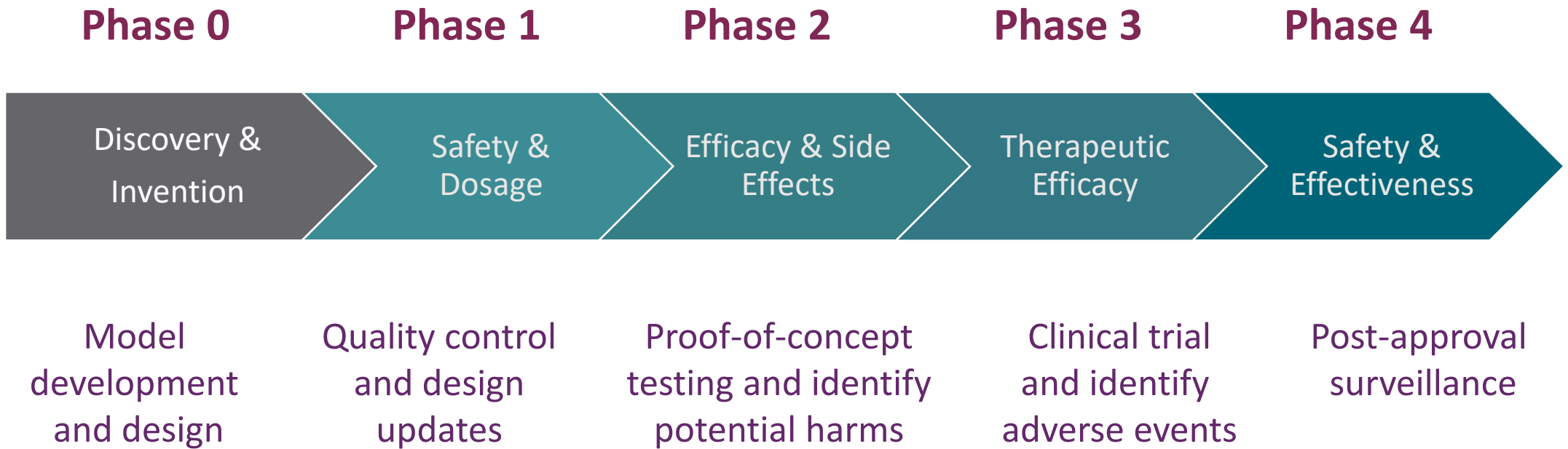
- Promotional
- Scholarly
- Pragmatic
- Medicolegal
- Ethical



vs.



How should we evaluate Medical AI?

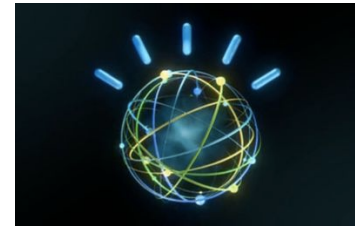
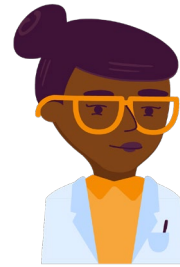


Good Clinical Practices for Medical AI

- What are the responsibilities of sponsors, investigators, IRBs and others involved in Medical AI studies?
- Do investigators need to?
 - Undertake only those Medical AI studies that are effective at establishing a scientific hypothesis
 - Understand and protect the rights of human subjects involved in Medical AI studies
 - Track and record the full impact of a Medical AI intervention, including adverse events
 - Ensure Good Algorithmic Practice for Medical AI research

Good Algorithmic Practices for AI Research

- Accuracy
- Fairness
- Usability
- Safety
- Explainability



Will the user then accept and use the AI model's results?